

Appropriate Containers for Flower Arrangements and Planters



* V-14—DESERT GOLD/COFFEE



* V-14—BLACK/WHITE



* V-14—FLAME/BLACK



* V-14—PEACH/MTN. HAZE



* V-14—WHITE/NAVY BLUE

* V-14 Only in colors shown



302—6" CANDLE VASE



4SC—5" CUP-BOWL



26LC—4 1/2" —6 OZ.
TUMBLER VASE



M2—6" —18 OZ.
MUG



5M—5 1/2" —16 OZ.
MUG



4M—4 1/2" —18 OZ.
MUG



23A—6" SQ. PEDESTALLED
VASE



F52—7" PEDESTALLED
URN



176—4" PLANTER



F33—3 3/4 x 7" FLUTED PLANTER



T7—3 1/2" COCONUT PLANTER



95—8 1/2" FREE FORM VASE



37—4" HEXAGONAL
PLANTER



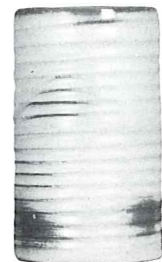
65—6 1/2" HEXAGONAL
VASE



64—9 1/2" OCTAGONAL
VASE



72—10" RINGED
CYLINDER VASE



172—6 1/2" RINGED
CYLINDER VASE



272—4" RINGED
CYLINDER VASE

Not Available in Flame. Not Available in Flame.

BUD VASES



20—6"



31—6"



28—6 1/2"



38—6"



47—5"



40—5"



18—5"

Small containers for miniature or dried arrangements



BP



XO



504

* BP and 4Y — Solid Colors only. NO T.C.



* 4Y